


## BaerCoil® Taps with pilot nose

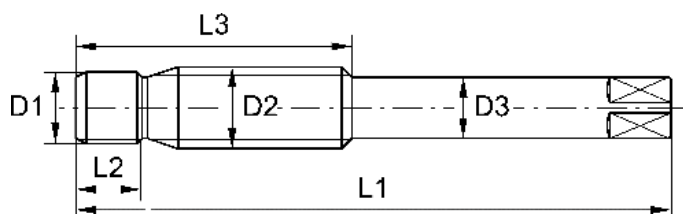
HSSG	EG	works standard
	STI	



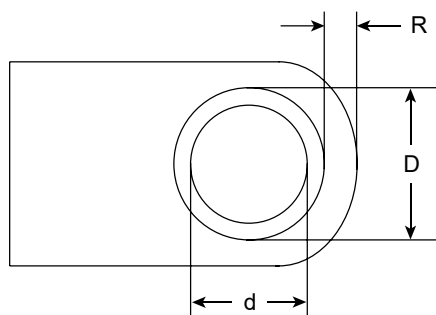
M	D1	D2	D3	L1	L2	□		No.	€
M 6 x 1,0	6,0	7,30	8,0	70	8	28	6,3	B3630	12,00
M 8 x 1,25	8,0	9,62	8,0	75	8	32	6,3	B3631	13,00
M 10 x 1,0*	10,0	11,30	8,0	73	8	32	6,3	B3632	16,20
M 10 x 1,5	10,0	11,95	9,0	80	9	37	7,1	B3633	16,20
M 12 x 1,25*	12,0	13,62	11,0	81	8	33	9,0	B3634	21,00
M 14 x 1,25*	14,0	15,57	12,5	90	8	48	10,0	B3635	24,50
M 18 x 1,5*	18,0	19,95	16,0	116	10	47	12,5	B3636	37,00

\* dimensions for spark plug threads

- for tapping internal threads in damaged metric threads
- no pre-drilling needed
- mainly used for repairing spark plug thread
- for through holes and very deep blind holes



### Minimum wall thickness



d = nominal diameter  
 D = outside diameter of holding thread  
 R = residual wall thickness

$$R (\text{min}) = 0,375 \times D$$

The minimum wall thickness mainly depends on individual operating data.

These define material strength and length of thread engagement. The indicated guide value formulas apply to aluminium, cast and wrought alloys and the length of thread engagement of BaerCoil Wire Thread Insert of 1.5 D.