



BaerFix[®]



Inserting Tools



BaerFix® Inserting Tools

with 1/4" hexagonal drive




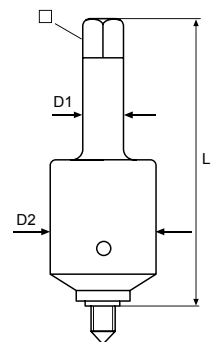
	Length			No.	€
M 3 x 0,5	46,00 mm	5,50 mm	1/4"	1-KEBW03	9,21
M 4 x 0,7	48,00 mm	7,00 mm	1/4"	1-KEBW04	9,21
M 5 x 0,8	57,00 mm	8,00 mm	1/4"	1-KEBW05	9,21
M 6 x 1,0	62,00 mm	10,00 mm	1/4"	1-KEBW06	9,21
M 7 x 1,0	72,00 mm	11,00 mm	1/4"	1-KEBW07	9,70
M 8 x 1,25	72,00 mm	13,00 mm	1/4"	1-KEBW08	11,22
M 10 x 1,0	77,00 mm	17,00 mm	1/4"	1-KEBW1010	12,92
M 10 x 1,5	82,00 mm	17,00 mm	1/4"	1-KEBW10	12,53
M 12 x 1,25	79,00 mm	19,00 mm	1/4"	1-KEBW1212	14,68
M 12 x 1,5	79,00 mm	19,00 mm	1/4"	1-KEBW1215	14,68
M 12 x 1,75	92,00 mm	19,00 mm	1/4"	1-KEBW12	13,83
M 14 x 1,5	114,00 mm	19,00 mm	12 mm	BEBW1415	14,68
M 14 x 2,0	114,00 mm	19,00 mm	12 mm	BEBW1420	14,68
UNC 1/4 x 20	62,00 mm	7/16 "	1/4"	1-KEBW21	10,46
UNC 5/16 x 18	67,00 mm	1/2 "	1/4"	1-KEBW22	10,46
UNC 3/8 x 16	77,00 mm	9/16 "	1/4"	1-KEBW23	12,76
UNC 7/16 x 14	87,00 mm	11/16 "	1/4"	1-KEBW24	14,20
UNC 1/2 x 13	117,00 mm	3/4 "	10 mm	BEBW25	14,86
UNF 1/4 x 28	62,00 mm	7/16 "	1/4"	1-KEBW31	10,46
UNF 5/16 x 24	67,00 mm	1/2 "	1/4"	1-KEBW32	10,46
UNF 3/8 x 24	77,00 mm	9/16 "	1/4"	1-KEBW33	12,76
UNF 7/16 x 20	87,00 mm	11/16 "	1/4"	1-KEBW34	14,20
UNF 1/2 x 20	117,00 mm	3/4 "	10 mm	BEBW35	14,86

BaerFix® Machine Inserting Tools

with square drive



	D1	D2	L	 No.	€
M 3 x 0,5	8 mm	18 mm	80 mm	6 mm	MEBW03 75,08
M 4 x 0,7	8 mm	18 mm	80 mm	6 mm	MEBW04 75,08
M 5 x 0,8	12,5 mm	30 mm	96,5 mm	10 mm	MEBW05 95,24
M 6 x 1,0	12,5 mm	30 mm	96,5 mm	10 mm	MEBW06 95,24
M 8 x 1,25	12,5 mm	30 mm	96,5 mm	10 mm	MEBW08 95,24
M 10 x 1,5	13 mm	40 mm	110 mm	10 mm	MEBW10 123,59
M 12 x 1,75	13 mm	40 mm	110 mm	10 mm	MEBW12 123,59
M 14 x 2,0	13 mm	40 mm	110 mm	10 mm	MEBW14 224,07
M 16 x 2,0	13 mm	40 mm	110 mm	10 mm	MEBW16 237,93




i Please see values for speed and installation torque on page 23.

BaerFix® Inserting Tools for spark plug

with hexagonal drive



	Length		No.	€
M 10 x 1,0	128,00 mm	17 mm	ZEBW10	18,15
M 12 x 1,25	128,00 mm	19 mm	ZEBW12	19,29
M 14 x 1,25	128,00 mm	19 mm	ZEBW14	20,43

BaerFix® Drill Bits



DIN 338 - HSS Straight Shank Drill Bit



DIN 338-A - HSS Reduced Shank Drill Bit (13 or 16 mm)



DIN 345 - HSS Morse Taper Shank Drill Bit

Ø	M	M	UNC	UNF	BSW	DIN	No.	€
4,20 mm	M 2 x 0,4	M 2,5 x 0,45				338	1-16142	1,30
4,70 mm	M 3 x 0,5		UNC 4 x 40	UNF 4 x 40		338	1-16147	1,20
5,60 mm	M 3,5 x 0,6		UNC 6 x 32	UNF 6 x 40		338	1-16156	2,07
6,10 mm	M 4 x 0,7		UNC 8 x 32	UNF 8 x 36		338	1-16161	2,29
7,50 mm	M 5 x 0,8		UNC 10 x 24	UNF 10 x 32		338	1-16175	3,04
9,30 mm	M 6 x 1,0		UNC 1/4 x 20	UNF 1/4 x 28	BSW 1/4 x 20	338	1-16193	4,35
11,30 mm	M 8 x 1,25		UNC 5/16 x 18	UNF 5/16 x 24	BSW 5/16 x 18	338	1-161113	7,94
12,40 mm	M 10 x 1,0*					338-A	1-161124	#NV
13,25 mm	M 10 x 1,5		UNC 3/8 x 16	UNF 3/8 x 24	BSW 3/8 x 16	338-A	1-111132	18,81
14,50 mm	M 12 x 1,25*					338-A	1-111145	#NV
15,25 mm	M 12 x 1,75		UNC 7/16 x 14	UNF 7/16 x 20	BSW 7/16 x 14	338-A	1-111152	27,17
17,00 mm	M 14 x 2,0	M 14 x 1,25*	UNC 1/2 x 13	UNF 1/2 x 20	BSW 1/2 x 13	338-A	1-111170	34,02
19,00 mm	M 16 x 2,0		UNC 5/8 x 11	UNF 5/8 x 18	BSW 5/8 x 11	338-A	1-111190	34,02
21,00 mm	M 18 x 2,5					338-A	1-111210	46,19
25,00 mm	M 20 x 2,5	M 22 x 2,5	UNC 3/4 x 10	UNF 3/4 x 16		338-A	1-111250	62,81
29,00 mm	M 24 x 3,0					338-A	1-111290	85,64
33,00 mm	M 27 x 3,0					345	1-130330	188,23
35,00 mm	M 30 x 3,5					345	1-130350	211,05

* for spark plug thread inserts

The drill bit diameters are approximate diameters. Brittle, tough and hard materials need a larger borehole than soft or elastic materials.

BaerFix® Countersink HSSG

with 1/4" hexagonal drive
to countersink a borehole



Ø	M	UNC	UNF	BSW		No.	€
10,4 mm	M 2 x 0,4 - M 6 x 1,0	UNC 4 x 40 – UNC 1/4	UNF 4 x 48 – UNF 1/4		1/4"	1-B9402	10,16
16,5 mm	M 8 x 1,25 - M 12 x 1,75	UNC 5/16 – UNC 7/16	UNF 5/16 – UNF 7/16	BSW 1/4 – BSW 7/16	1/4"	1-B9403	11,30

Generally it is not necessary to countersink the bore hole. However, we do recommend a countersink to avoid warping the workpiece surface when screwing in the insert.

BaerFix® Adapter Nut

1/4" internal hexagon to 10 mm outside hexagon

internal hexagon	external hexagon	No.	€
1/4"	10 mm	B9501	3,47





BAER Vertriebs GmbH
Robert-Bosch-Str. 5
68542 Heddesheim
Germany

Tel: +49 (0) 6203 4048 790
Fax: +49 (0) 6203 4048 791
E-Mail: info@baercoil.com
www.baerfix.com

BaerFix[®]